



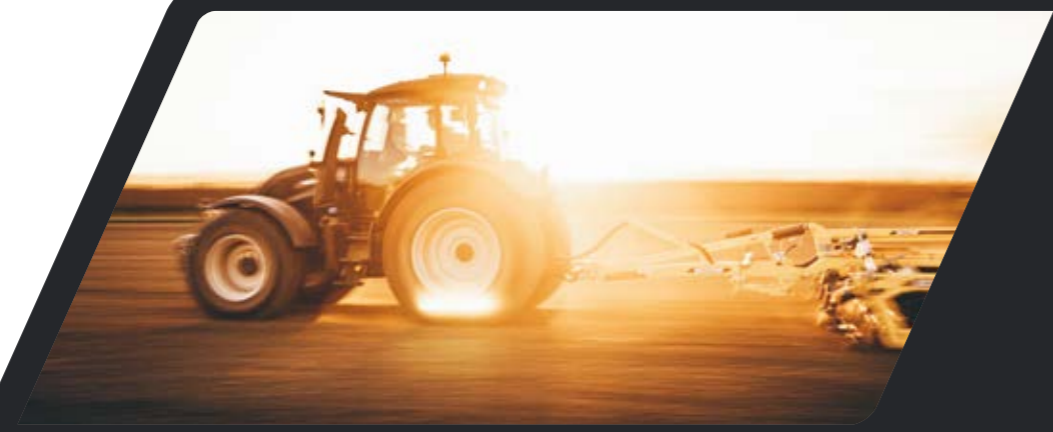
MODEL RANGE



VALTRA

YOUR WORKING MACHINE

THE BEST TRACTOR EXPERIENCE



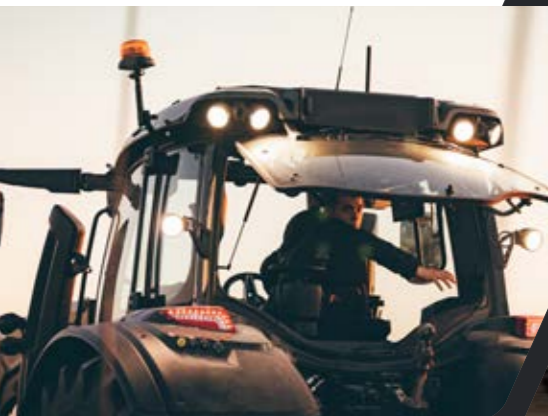
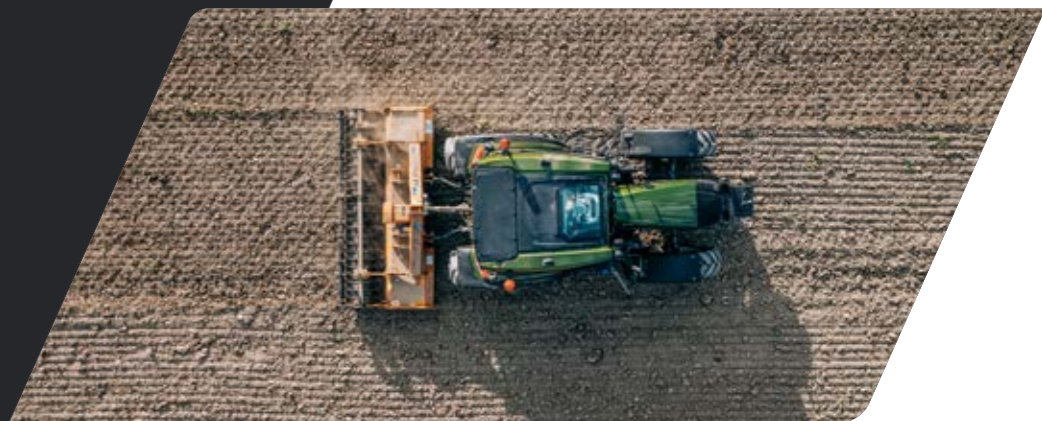
ABOUT US

OUR STORY	04
SUSTAINABILITY	06
UNLIMITED	38



MACHINE

DESIGN	08
TECHNOLOGY	10
MODEL RANGE	14
TECH SPECS	32



SERVICES

OPTION PACKAGES	12
CONNECT, CARE & GO	28
FINANCING	30



WE WORK HARD TO MAKE HARD WORK EASY

Whether you work in agriculture and farming, forestry, municipality, airport maintenance or construction, our mission is to provide you with the best tractor experience by knowing you and your business.

Valtra tractors are durable, robust machines that get the job done in all conditions. Comfort and ease of use are at the core of every Valtra tractor. Smart solutions, technologies and the right services keep you on track. Co-operating with our network of partners ensures all needs can be matched without limitations. It's all more power, precision and profit to you – with added peace of mind.

For seven decades our purpose has been to know what you need, to think ahead and to build the best working machines we can. Generation after generation we have improved safety, increased efficiency and utilized technology. Everything we do is made by people like you.

Increasing populations and changing regulations require agriculture to be more productive and make the best use of resources. Situations and demands change each day. Your machines need to be reliable and assist you in staying ahead. Our focus will not shift. We want to continue guiding you through the

changes with the aid of technology and smart solutions, and to provide machines that enable comfortable, profitable and sustainable farming. We promise to always stay one step ahead so you can take one step less.



AWARDED SCANDINAVIAN DESIGN

Form follows function: it is the cornerstone of our design philosophy, that is based on the Scandinavian way of focusing on functionality first.

- 


- 


- 


- 

- 

- 

- 

- 

BUILT TO LAST

Always working hard to make your hard work easier.



BUILT TO WORK

Always one step ahead so you can take one step less.

BUILT FOR YOU

Always there for you in every situation that arises.



SMART AND SUSTAINABLE FARMING FOR THE FUTURE

Valtra is probably the most sustainable tractor brand in the world. Our global sustainability impact reaches far beyond our own operations. We help our customers be more sustainable and productive with innovative technology that enables them to reduce fuel use, lower inputs, save time, improve soil health and maximise yields.



WHAT WE OFFER

From entry-level Smart Farming to large-scale fleet management, Valtra offers our customers easy-to-use tools and solutions, and the knowledge they need to be more sustainable and increase profit. Valtra Guide and Section Control support soil health and biodiversity while saving on inputs and maximising yields. Valtra Connect offers opportunity to automate reporting on carbon footprint calculations, as well as share diagnostic data to minimise downtime, which is possibly

why 70% of Valtra tractors in Europe use Valtra Connect. We offer a safer and more comfortable working environment for tractor operators through innovations like TwinTrac and Valtra Guide that reduce physical and mental strain. We offer our customers the opportunity to extend the working life of their tractor with certified remanufactured parts from AGCO Reman that save 90% on new materials while minimising downtime.

WHAT WE DO

We continually develop and invest in our products and services to be more sustainable throughout the entire supply chain and product lifecycle. 92% of the materials in our tractors is recyclable, and over 75% of waste material from the manufacturing process is recycled. Our factory in Suolahti, Finland, is one of AGCO's most energy efficient factories. 89% of our energy usage comes from renewable sources. Our electricity is

generated from mostly renewable sources such as water, wind, and bio-based fuels. All of our on-site non-electric forklift trucks run on 100% renewable diesel by Neste My. All our tractors are tested and first filled with Neste My renewable biodiesel.

SMART

Valtra's Smart Farming solutions allow farmers to make smarter, evidence-based decisions. Valtra Connect shows the exact position and status of connected tractors at any given moment. Building and analysing patterns over time can reduce idle time and fuel consumption and improve logistics. Automatically generating, saving, and syncing data saves time on paperwork. Diagnostic data can also be shared with dealers to prevent unscheduled downtime.

SIMPLE

The SmartTouch armrest is easier to use than a smartphone, putting the right amount of application in the right place at exactly the right time. Valtra Guide and Section Control automate tasks, increasing accuracy and yields, while minimising inputs and reducing soil compaction. Overlaps can be reduced from up to 30 cm without autoguidance, to just 2 cm with Valtra Guide. This enables accurate work even in poor visibility. Section Control takes the guesswork out of application by automatically reducing overlap at the headland from around 5% to 0%.

SAVINGS

Valtra tractors can help farmers achieve their carbon reduction goals while saving fuel and improving time management. All our engines are Stage V compliant. Valtra's EcoPower concept allows up to 10% fuel savings. TwinTrac enables the tractor to be safely, and comfortably operated in reverse, saving 12% on time and 11% on fuel. Valtra Unlimited offers endless possibilities to specify a 365-day multipurpose machine that can handle a broader range of tasks, eliminating the need for separate specialist vehicles.

**5%
OVERLAP** **12%
TIME** **11%
FUEL**



RELIABLE, ROBUST AND EASY TO USE

Whichever model you choose, every Valtra tractor shares the same essential features that make your work easier and your work day more comfortable. Each one is designed to give you dependable, controllable power exactly where and when you need it.

1. Tough, durable and well-balanced chassis.
2. Powerful Stage V engine.
3. Precise, easy-to-use transmission.
4. Powerful hydraulics for efficient work.
5. Sloping bonnet for a clear front view.
6. Large convex windows for a wide viewing angle.
7. Comfortable, spacious and ergonomic cabs.
8. A huge range of optional features.

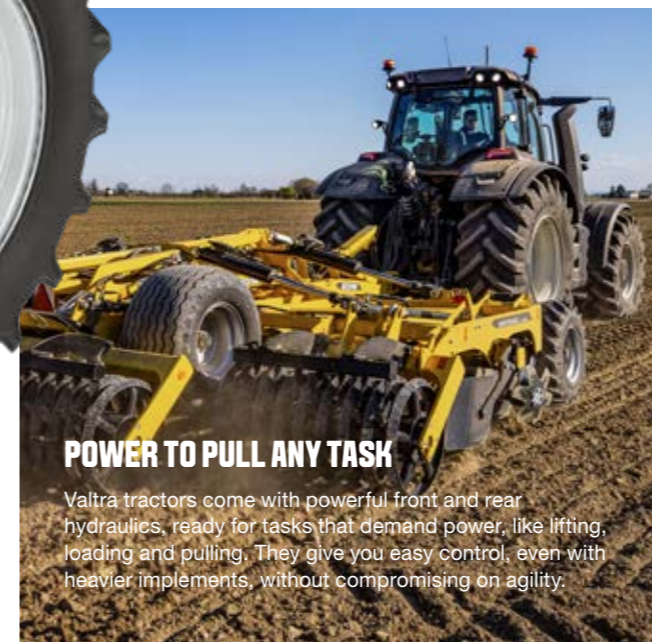
WORK IN COMFORT WITH A 360° VIEW

All Valtra tractor cabs are designed around you, for all-day comfort and excellent 360° visibility.



POWER AND EFFICIENCY

The Stage V engine gives you the right amount of power to get the job done with outstanding fuel economy, all while meeting the latest emission regulations.



POWER TO PULL ANY TASK

Valtra tractors come with powerful front and rear hydraulics, ready for tasks that demand power, like lifting, loading and pulling. They give you easy control, even with heavier implements, without compromising on agility.

VALTRA TRANSMISSIONS

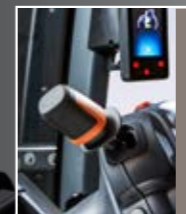
Valtra tractors offer you a range of transmission and hydraulic options that allow you to perform tasks precisely, comfortably and with maximum available power.

HITECH

- High efficiency and comfort in cost-effective all-round tractors
- The higher HP classes are powerful, cost-effective pulling machines
- A Series GL models have gear levers
- Other HiTech models and series have full electric gear shift and multi-step powershift with user-friendly automatics
- Electrically controlled power lift
- Open centre implement hydraulics with easy mechanical control
- Optional electronic control for front lift or loader

VERSU

- Available in G, N and T Series
- Advanced SmartTouch user interface:
 - easy-to-use touchscreen terminal
 - highly ergonomic armrest
- Access all tractor controls and settings with prize-winning SmartTouch interface
- Sophisticated control of fully adjustable and programmable hydraulic valves
- Closed centre hydraulics with high output, starting from 110 l/min
- Standard features include U-pilot headland management for easy automation of repeated tasks in the field



All variants, HiTech, Active, Versu and Direct come with Valtra's famous power shuttle with integrated park position.

ACTIVE

- Available in G, N and T Series
- HiTech and high output closed centre load sensing hydraulics; starting from 110 l/min
- For efficient work with even the most advanced implements
- Easy mechanical control of spool valves
- Power beyond option
- The N and T Series have separate oil for hydraulics to protect transmission from contamination
- Optional Valtra Guide, precision farming and radar based slip control systems

DIRECT

- Direct CVT in the N and T Series, AVT in the S Series
- Both include the SmartTouch user interface
- U-pilot and electronic hydraulic control
- Direct has a CVT, Constantly Variable transmission. With its four work areas Direct offers high efficiency and precision to any work task
- The S Series is only available with AVT
- Up to 400 HP
- For really heavy tasks with its high output power lift and hydraulics

MEET YOUR MONEYMAKERS

Get more done in less time without compromising on performance or precision. Valtra Smart Farming is a set of seamlessly connected, easy-to-use technologies that save you time while reaping profits. The savings you make on fuel and expensive inputs on the field will ensure your work is sustainable. All smart functions can be controlled with the SmartTouch armrest with just two taps or swipes – it's easier than your smartphone.

VALTRA GUIDE

Valtra Guide is our auto-guidance solution, which makes sure that recording and configuring waylines and boundaries is as simple as it gets. With Valtra Guide you can worry less about gaps, overlap and unnecessary driving on the field. Valtra Guide uses GPS guidance to steer your tractor for you, following waylines precisely and saving you time, fuel and money.



VALTRA AUTO U-PILOT HEADLAND MANAGEMENT SYSTEM

With Auto U-pilot your headland management sequence starts automatically when the tractor goes over a set headland line, making work both perfectly precise and easy.



SMARTTOUCH EXTEND

SmartTouch Extend is a second touchscreen to use alongside Valtra SmartTouch. SmartTouch Extend makes it possible to simultaneously display the ISOBUS implement control view on one screen and Valtra Guide automated steering control on the other, for example.



SMARTTOUCH

Valtra SmartTouch brings easy living to your fingertips. It combines a 9" touchscreen with clearly arranged buttons, a multifunction lever, a hydraulics joystick and a comfortable armrest. It's simple, thoughtfully designed and gives you complete control of all your smart farming functions.

A-PILLAR DISPLAY

The new Valtra smart A-pillar display puts all the information you need exactly where you want it. Essential information always clearly displayed up top and the lower drive displays can be configured the way you like.



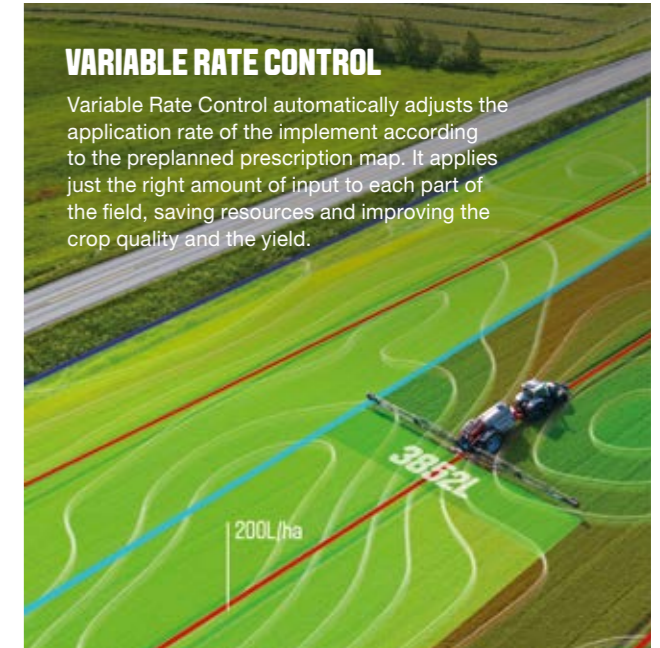
ISOBUS

With Valtra SmartTouch and ISOBUS (ISO 11783 standard), you can work with any ISOBUS compatible implement, from any manufacturer. When you connect an ISOBUS compatible implement to your Valtra tractor, all the relevant machine controls are uploaded to the SmartTouch terminal for easy implement control. No extra equipment or cables are needed, keeping your tractor office tidy.



VARIABLE RATE CONTROL

Variable Rate Control automatically adjusts the application rate of the implement according to the preplanned prescription map. It applies just the right amount of input to each part of the field, saving resources and improving the crop quality and the yield.



VALTRA SECTION CONTROL

Valtra Section Control precisely and automatically controls your implements to eliminate overlap and avoid gaps when inputs are applied to the field. It is especially useful with larger implements and uneven or diagonal headlands, helping to improve yields and reduce input costs.

TASKDOC® PRO

With TaskDoc® Pro you'll know more about your fields, with precise records and data for each part of them. You'll also have less paperwork. Just start working and all the documentation you need is created automatically. When you're finished, the documentation can be wirelessly transferred to your farm management system (FMS). TaskDoc® Pro gives you the information you need to make better decisions and improve your farm management.



VALTRA CONNECT

Valtra Connect is our telemetry solution that records tractor activity and GPS movements, all the time. It can display history and real time data on your mobile device and you can access the data anywhere, anytime. Using this data, you and your Valtra service partner can anticipate maintenance needs, and react faster to solve minor issues and avoid extra visits to your authorised service centre.



AGCO telemetry for customer
Fully customer and user driven user experience

YOU FIND THE WORK. WE'LL FIND THE WAY.

A tractor is the perfect machine for municipal work, forestry, airport maintenance, defense purposes and, of course, farming. With us you get it done right. Whether it's because of changing work needs or wanting to stand out from the crowd, there's always a reason to go Unlimited. What do you need? What have you been dreaming of? Done and done. We make it happen.

PERFORMANCE FOR ANY PURPOSE

The Unlimited studio can fit any accessories and equipment that are not available directly from the production line during the normal manufacturing process. With Valtra Unlimited, your tractor is a true multi-purpose vehicle, built according to specifications given by you, with the design, comfort and features you need to perform in any environment.

FORM, FUNCTION AND STYLE

If your work requires a certain colour scheme for your tractor or you have a creative vision in mind, Valtra Unlimited is the way to go about it. Inside, Valtra Unlimited tractors can be equipped with high-quality leather seats that guarantee driving comfort. Interior panels can also be customised, and more special requests can be fulfilled quickly.

FACTORY FITTED

All the accessories and equipment fitted by the Valtra Unlimited studio are covered by the factory warranty, and we also supply all the servicing and spare parts for them. The accessories and equipment available from the Unlimited Studio include additional lights, central lubrication, stereo systems and much more.



MUNICIPALITY

365-day multi-purpose vehicle

The regulations of municipal machinery call for particular features. A special colour scheme, safety colours and lights, warning signs and other safety enhancing features can all be fitted at the Valtra Unlimited Studio. By replacing specialized vehicles, such as graders and sweepers, with a tractor you can significantly increase your efficiency, both financially and in terms of productivity.



DEFENCE

A true multi-purpose vehicle

Defence applications call for a vehicle with special capabilities. For a fast pace of work, large working areas and long transits you need safety, a large fuel capacity, multiple implements and worker comfort. With individually selected features, extreme maneuverability and powerful towing and load capacity, Valtra Unlimited tractors and equipment can fill in for other vehicles.



AIRPORT MAINTENANCE

More versatile than specialised trucks

A tractor can easily replace trucks in airports due to their versatility and suitability. With the correct tools, such as ploughs, sweeper-blowers and mowers, your Unlimited tractor can be utilised year-round. With features such as airport radio, correct tyres and lights and specific colours, your machine will be perfect for airport maintenance.



FORESTRY

For tough work and rough terrain

For productive forestry work you need a vehicle with special capabilities. Forestry involves large working areas, long transits and working in tight spaces between trees. You need safety, excellent visibility and lighting, a large fuel capacity, multiple implements and all-day driver comfort. You can get all this with a Valtra Unlimited tractor.



ECONOMICAL OPTIONS

Building your working machine with Valtra is an experience in itself. We offer hundreds of different accessories and options to choose from, adding up to an infinite number of different combinations. Because picking and choosing can be difficult, we now offer cost-effective option packages to help you with decision-making.

The option packages make it easier to specify a new tractor: nothing important is left out and the resale price of the tractor is also taken into account. When purchased as a package, the equipment is less expensive than when ordered separately. Best of all, the option packages do not limit you from selecting additional features from the Unlimited Studio.



1

SELECT YOUR OPTION PACKAGE

Choose a cost-effective option package to meet your needs.



2

SELECT YOUR FRONT LOADER

The package unlocks the whole range of possibilities for front loader work including a factory-fitted and tested front loader & subframe set.



3

CUSTOMISE TO YOUR NEEDS

You can add Valtra Unlimited options to any Option Package to tailor your tractor to your exact needs.



COMFORT

- Front axle suspension
- Wide angle windscreen wiper (N, T Series)
- Suspended cab
- Premium air suspended seat
- Premium LED working lights



COMFORT PRO

- All options from the Comfort package
- Premium interior
- Automatic air conditioning + lower heater unit
- Right side window wiper



TECHNOLOGY

- All Comfort Package options: Comprehensive suspension, premium working lights and much more
- Full Valtra Guide: one of 4 options with Novatel or Trimble antenna
- ISOBUS rear
- AutoControl D, drive balance control + rear linkage slip control system with radar sensor
- Automatic Slip Regulator system (Versu and Direct)
- Power socket set

TECHNOLOGY PRO

- All options from Comfort and Technology
- Full Valtra Guide centimetre accuracy with Novatel or Trimble antenna
- Precision farming: One of 4 Section Control or Section Control & Variable Rate options
- SmartTouch Extend
- TaskDoc Pro
- Auto U-Pilot
- Wayline Assistant

TECHNOLOGY PRO X

- All options from Technology and Technology Pro
- Valtra Section Control 36 + VRC 5 products
- TaskDoc Pro server license 1 year
- DKE agrirouter 1 year

Check Valtra series specific option package possibilities with your Valtra Dealer.



FIND YOUR PERFECT MATCH

Whether it's a nimble superstar or a big beast you're looking for, we've got your covered. Our six models cover a power range of 75 to 405 horsepower and get the job done in any season, any condition and any circumstance.

WHICH ONE IS YOURS?



F SERIES
75-105 HP



A SERIES
75-135 HP



G SERIES
105-135 HP



N SERIES
135-201 HP



T SERIES
155-271 HP



S SERIES
290-405 HP

A SPECIALIST TO HANDLE YOUR MOST VALUABLE CROPS

The Valtra F Series is the ultimate specialist for vineyards, fruit farms and other cultivation that requires great care and a nimble machine. It's packed with powerful hydraulics for the best implements, and it comes with all the renowned Valtra comfort features. Pick yours from three styles of body and get to work – the specialist way.



CABS WITH GREAT VISIBILITY

The F Series is perfectly suited to specialist crop operations. The cab is easy to access with air-conditioning, great visibility and controls on the right-hand side. The F Series is available with two widths of air conditioned cabs, as well as in a ROPS version.



HYDRAULICS FOR DEMANDING IMPLEMENTS

The Valtra F Series can be equipped with two or three hydraulic pumps and up to four implement valves. Flow control and mid-mounted quick couplers are available. The F Series has up to three tons power lift capacity.



A NIMBLE MACHINE

The specially shaped chassis combined with a front axle enable a 55-degree wheel angle. The 3.6 m radius makes tight turns possible.



SIZES TO FIT YOUR JOB

The Valtra F Series comes in three main versions. You can choose a tractor with or without a cab (1.5 - 1.8 m width) or go for the narrow model (1.3 - 1.5 m width) to fit through tighter spaces.



THE SMALL GIANT THAT SAVES THE DAY

The award-winning Valtra A Series is an agile and comfortable machine that packs the best features of a big machine in a compact form. This is where your work gets easy and fun without compromising on performance. Step inside the cabin and you will see - the A Series has it all.



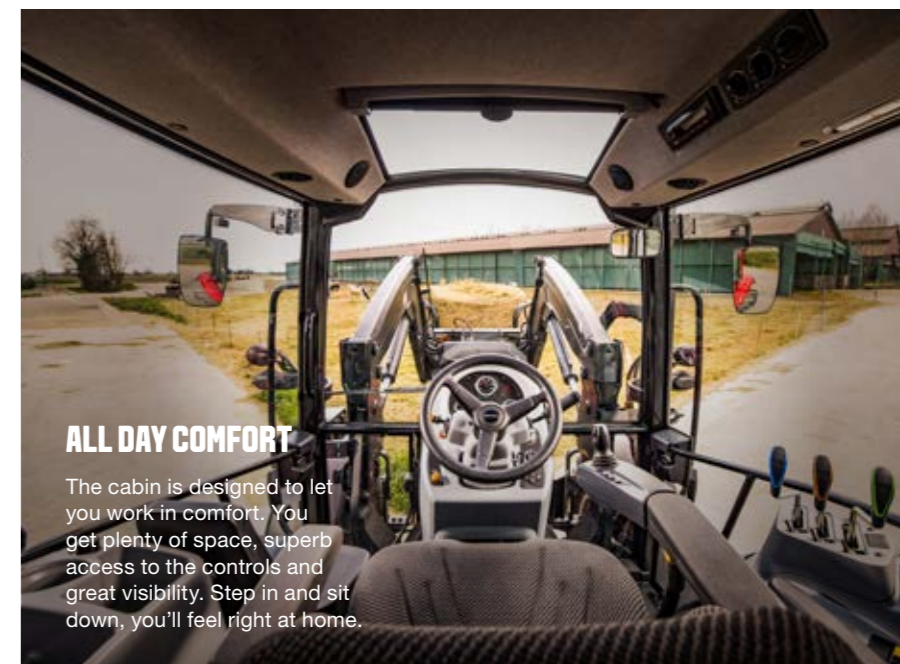
THE SMALL GIANT

The A Series is small in size and big in performance. Wherever you are, from tight spaces to open fields, it gives you the power to get the job done.



ALL DAY COMFORT

The cabin is designed to let you work in comfort. You get plenty of space, superb access to the controls and great visibility. Step in and sit down, you'll feel right at home.



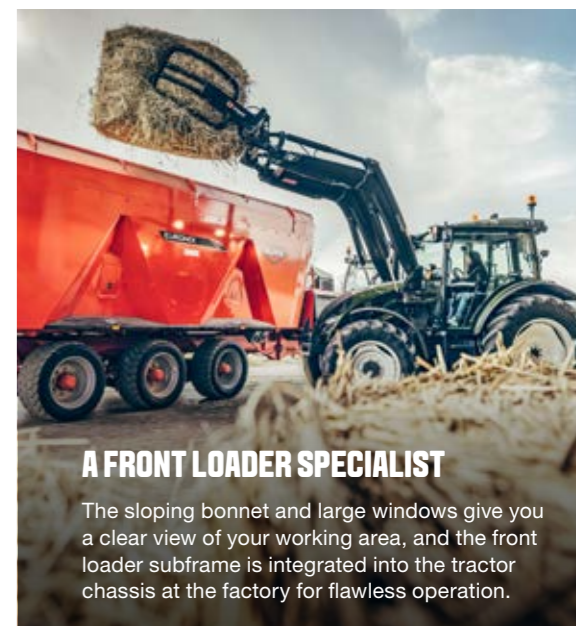
TWO TYPES OF TRANSMISSION

Choose from two transmission options: HiTech4 electronic transmission and GL mechanical transmission. Both are easy to use and help you work without fatigue.



A FRONT LOADER SPECIALIST

The sloping bonnet and large windows give you a clear view of your working area, and the front loader subframe is integrated into the tractor chassis at the factory for flawless operation.



EXPERIENCE THE SIMPLICITY OF GENIUS

The brand new Valtra G Series gives you complete control over your work. It's tough outside and smart inside. It's compact, it's agile and it's built for you. It's the best payback you ever got.



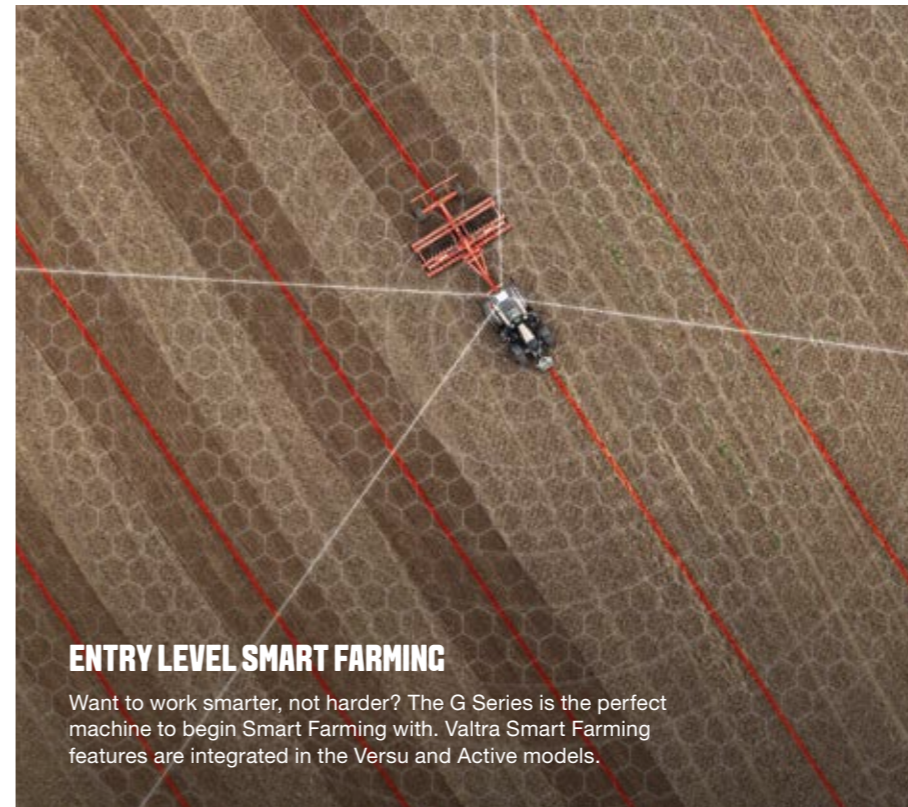
THE SWISS ARMY KNIFE

The G Series is the true multi-tool of the tractor world. While compact in size, it's packed with powerful hydraulics, easy-to-use Smart Farming features and the power for implements of various sizes.



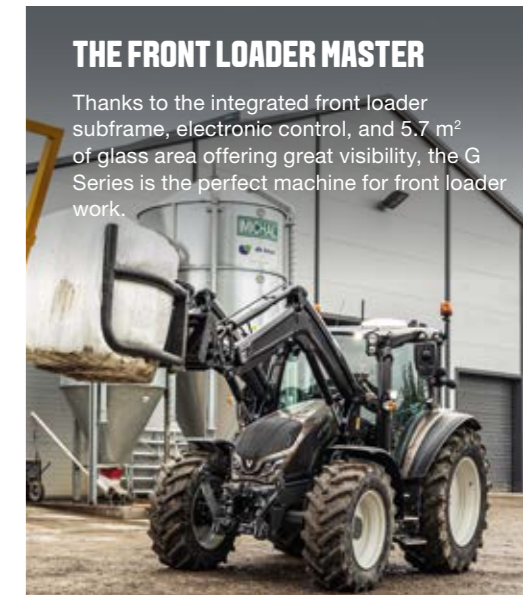
AGILITY IN THE GENES

Even though it's filled with the features and power of a big tractor, G Series truly acts like a small one. Its agility is previously unmatched by a tractor of similar size.



ENTRY LEVEL SMART FARMING

Want to work smarter, not harder? The G Series is the perfect machine to begin Smart Farming with. Valtra Smart Farming features are integrated in the Versu and Active models.



THE FRONT LOADER MASTER

Thanks to the integrated front loader subframe, electronic control, and 5.7 m² of glass area offering great visibility, the G Series is the perfect machine for front loader work.

PERFECTION IN SIZE, POWER AND COMFORT

The mighty yet compact Valtra N Series is now even more comfortable thanks to the new air-suspension on the front axle. The powerful 4-cylinder engine, the all-round visibility, precise handling and great agility make the N Series big where it matters.

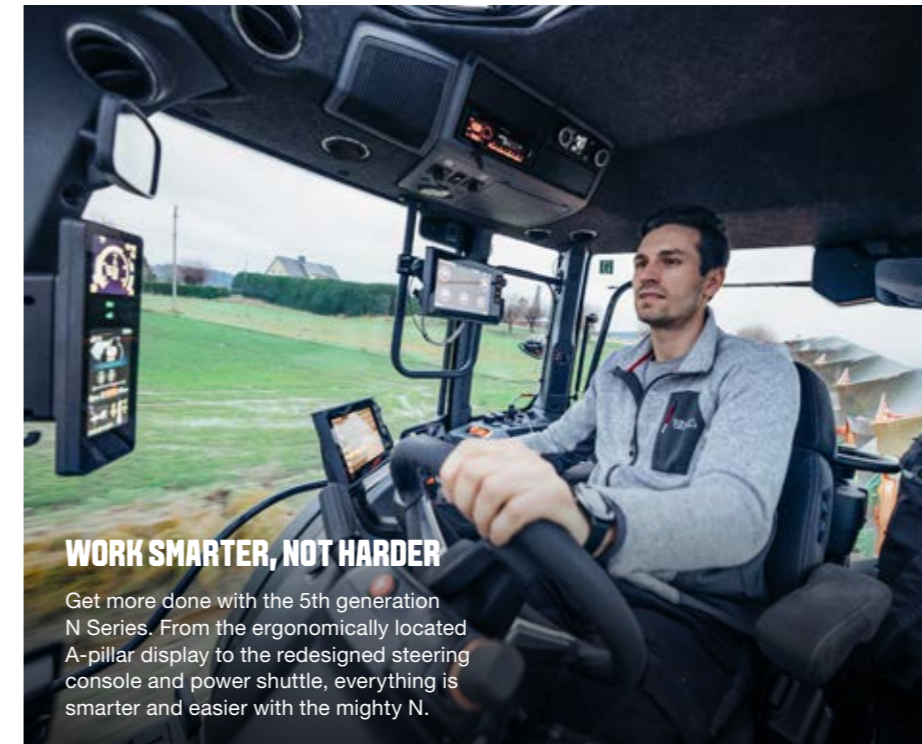


YOUR WORKING MACHINE

The functional and robust N Series is designed around the driver with built-in comfort, perfected ergonomics and LED daytime running lights as standard.

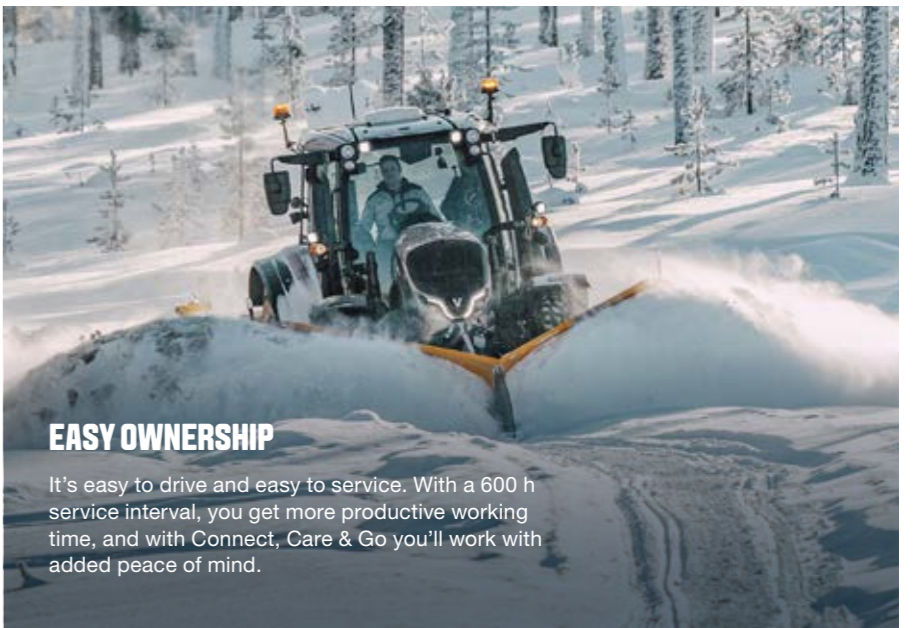
POWER AND EFFICIENCY

The Stage V engine gives you the right amount of power to get the job done with outstanding fuel economy, all while meeting the latest emission regulations.



WORK SMARTER, NOT HARDER

Get more done with the 5th generation N Series. From the ergonomically located A-pillar display to the redesigned steering console and power shuttle, everything is smarter and easier with the mighty N.



EASY OWNERSHIP

It's easy to drive and easy to service. With a 600 h service interval, you get more productive working time, and with Connect, Care & Go you'll work with added peace of mind.

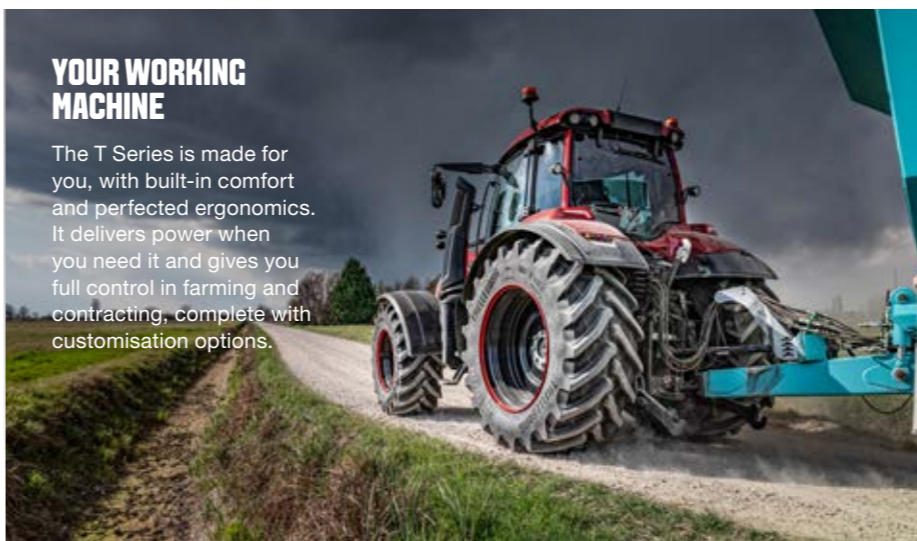
MORE POWER, MORE PRECISION, MORE PROFIT

More is more, and the Valtra T Series is here to give you plenty. It's the ultimate precision tool with plenty of muscle. Perfect all-round visibility means that you have total control over your land from the comfort of your cabin. The T Series is more value for your hard-earned money, and more money for your hard work.



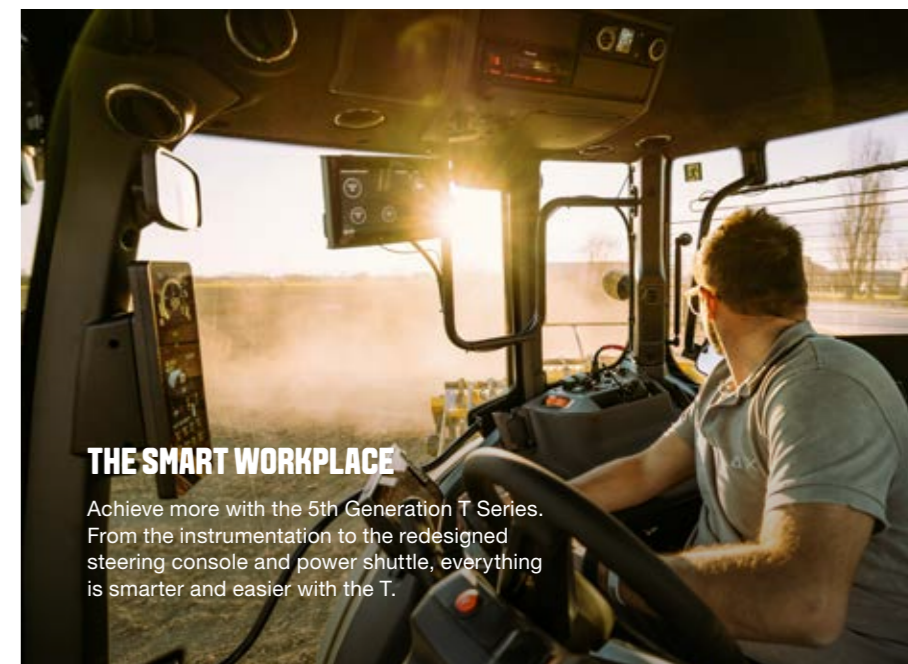
YOUR WORKING MACHINE

The T Series is made for you, with built-in comfort and perfected ergonomics. It delivers power when you need it and gives you full control in farming and contracting, complete with customisation options.



THE SMART WORKPLACE

Achieve more with the 5th Generation T Series. From the instrumentation to the redesigned steering console and power shuttle, everything is smarter and easier with the T.



POWER AND EFFICIENCY

The large AGCO Power Stage V six-cylinder engine gives you the right amount of power to get the job done with outstanding fuel economy, all while meeting the latest emission regulations.



EASY OWNERSHIP

It's easy to drive and easy to service. With a 600 h service interval, you get more productive working time, and with Connect, Care & Go you'll work with added peace of mind.



BIG JOBS JUST GOT BETTER

When you need to go big, go big. The Valtra S Series gives you a steady performance that helps you get the most out of your investment. Equipped with integrated and easy-to-use smart farming technologies, the S Series supports the profitability of your business today and tomorrow. And yes – this is a big machine, built to handle your toughest jobs, with maximum working comfort.



SMART FARMING BUILT IN

The built-in SmartTouch armrest makes it effortless to access all the settings and automated functions of your Valtra Smart Farming technologies, improving your accuracy, precision and return on investment.



UP TO 10% MORE POWER

Valtra's innovative SigmaPower is standard on the S Series. Whenever extra power is required by the PTO or hydraulics, the engine's electronic management system boosts output by as much as 10%.



WORK IN BOTH DIRECTIONS

Work effectively in both directions. Valtra's TwinTrac reverse-drive system makes your work even more efficient, especially when working with mowers and other heavy-duty implements.



COMFORT COMES STANDARD

The S Series is designed so you can work in comfort 24/7. The cab features Valtra AutoComfort four-point pneumatic suspension and air conditioning comes as standard. Even the driver's seat is ventilated.



ALWAYS CONNECTED. ALWAYS IN CONTROL.

You work hard. You operate in challenging and diverse environments, running five jobs at once, putting in long hours and hauling distances. It's our job to make your tractor experience the best it can be. Our easy Connect, Care & Go service concept offers unrivalled practicality that eases the daily operation and maintenance without adding your costs. The best tractor experience is not just the machine, or the moment you purchase it – we, our partners and our vast dealer network are here to help you through the whole lifecycle of your tractor.



We believe in a seamless connection between our customers, dealers, machines and the Valtra factory. When connected you can select the desired service and warranty packages to meet your requirements. We take care you, so you can take care of your business.



CONNECT

TRACTOR DATA, INFORMATION
AND SERVICES.

KEEP CONNECTED

By choosing Valtra you are choosing to connect with a team of dedicated professionals that help you make the most of your business. You can contact your local support team through our online customer portal which also gives you 24/7 access to tutorials, contract information and services around your machines. The Valtra Connect telemetry solution records tractor activity and GPS movements, constantly. It can display history and real-time data on your mobile device and computer so you can access the data anywhere, anytime. Using this data, you and your Valtra service partner can anticipate maintenance needs, and react faster to solve minor issues and avoid downtime and extra visits to your authorised service centre.



CARE

FACTORY EXTENDED
WARRANTY.

STAY SECURE

With Valtra Care extended warranty contracts you'll have financial security regarding additional repair costs of non-wearing parts. Valtra Care allows you to set your overheads when you purchase your Valtra tractor, or when the standard warranty expires. Overheads are flexible, offering three excess levels – 0 €, 290 € or 590 € and are available up to 5 years or 6,000 hours.



GO

MAINTENANCE
CONTRACT.

MAXIMISE UPTIME

Valtra Go service contracts ensure regular and thorough maintenance, which will prolong the reliable operation of your Valtra tractor. Maintenance costs are small compared to repair costs resulting from a lack of maintenance. The Valtra Go service package includes all prescribed maintenance work bookable up to 10,000 hours for new and used machines.

PEACE OF MIND. IN YOUR HANDS.

FINANCIAL STABILITY WITH COST CONTROL


Any business' cash flow can often be unpredictable and affected by many external factors. With agriculture, seasonal variations in costs and unpredictable weather and climate uncertainty mean keeping on top of costs can be tricky. Long-term financial sustainability, and your peace of mind, depend on financial stability and full control of your costs.

Machinery and equipment investments are often a large capital cost. That's why we offer you a range of solutions for flexible models of ownership for one tractor or a whole fleet.

Needs change over time. When your fleet needs to rapidly grow or you no longer need a machine, you want the peace of mind that your options are flexible and open. With the Rent, Buy, Lease programme offered by AGCO Finance, we are able to build a financing solution to meet your individual and specific needs.

Capital costs are not the only consideration in running your business. You may want the peace of mind that comes with knowing your servicing and maintenance costs are predictable. Connect, Care & Go, is the best way to keep your business cost-effective and stable.

TRY OUR SMART FINANCE CALCULATOR




BUY
TRACTOR OWNERSHIP
WITH OPTIONAL
CONNECT, CARE AND GO



RENT
SHORT TERM RENTAL
WITH INCLUSIVE
SERVICES



LEASE
OPERATIONAL LEASE
WITH OR WITHOUT
SERVICE CONTRACT



YOUR OWN VALTRA DEALER

Your Valtra dealer represents the best tractor and implement expertise in your area. He understands the technical aspects of your tractor and the challenges you face. You can always turn to your dealer and receive the best service from consultancy, maintenance, repair and spare parts to the purchase of a new piece of equipment. Valtra dealers are independent entrepreneurs. AGCO audits its dealer representatives each year to ensure that you get the best possible service.

GENUINE PARTS AND HIGH QUALITY ACCESSORIES - ALWAYS AVAILABLE

Valtra's comprehensive spare parts service supplies the parts you need – as fast as by the next morning. This helps you keep your tractor productive during the busy ploughing and harvesting seasons. The AGCO Parts label ensures that you are getting original Valtra spare parts that have been thoroughly inspected and tested.

UNLOCK



Missing a Smart Farming feature? Valtra Guide is your key to the world of SmartFarming. It opens up a lot of possibilities such as better precision and automatic headland turns. Equipping your Valtra tractor with Valtra Guide at the time of purchase, you can also equip it with other Smart Farming features. You can do this either when purchasing your tractor or at a later occasion when you have the need for the new features. Just contact your local dealer for prices and more information about upgrading your Smart Farming features.



AGCO MAKES THEM UNBEATABLE, WE MAKE THEM AFFORDABLE.

At AGCO Finance we tailor your personal finance solution based on your cash flow and operation. Tell us how much you can afford on a monthly basis and we will create a flexible payment schedule according to your business needs, taking seasonal variations into account.

As a full service provider we also offer financing services such as leasing, rental

and insurance. Our services may vary between countries, so please check our website or your nearest dealer for the available offering.

VALTRA TEAM

Valtra Team is our customer magazine, published twice a year. Each issue contains useful information about the latest innovations and the most efficient working methods. You can also access the

magazine's archives online and read articles dating back to 2000.

AGCO ACADEMY

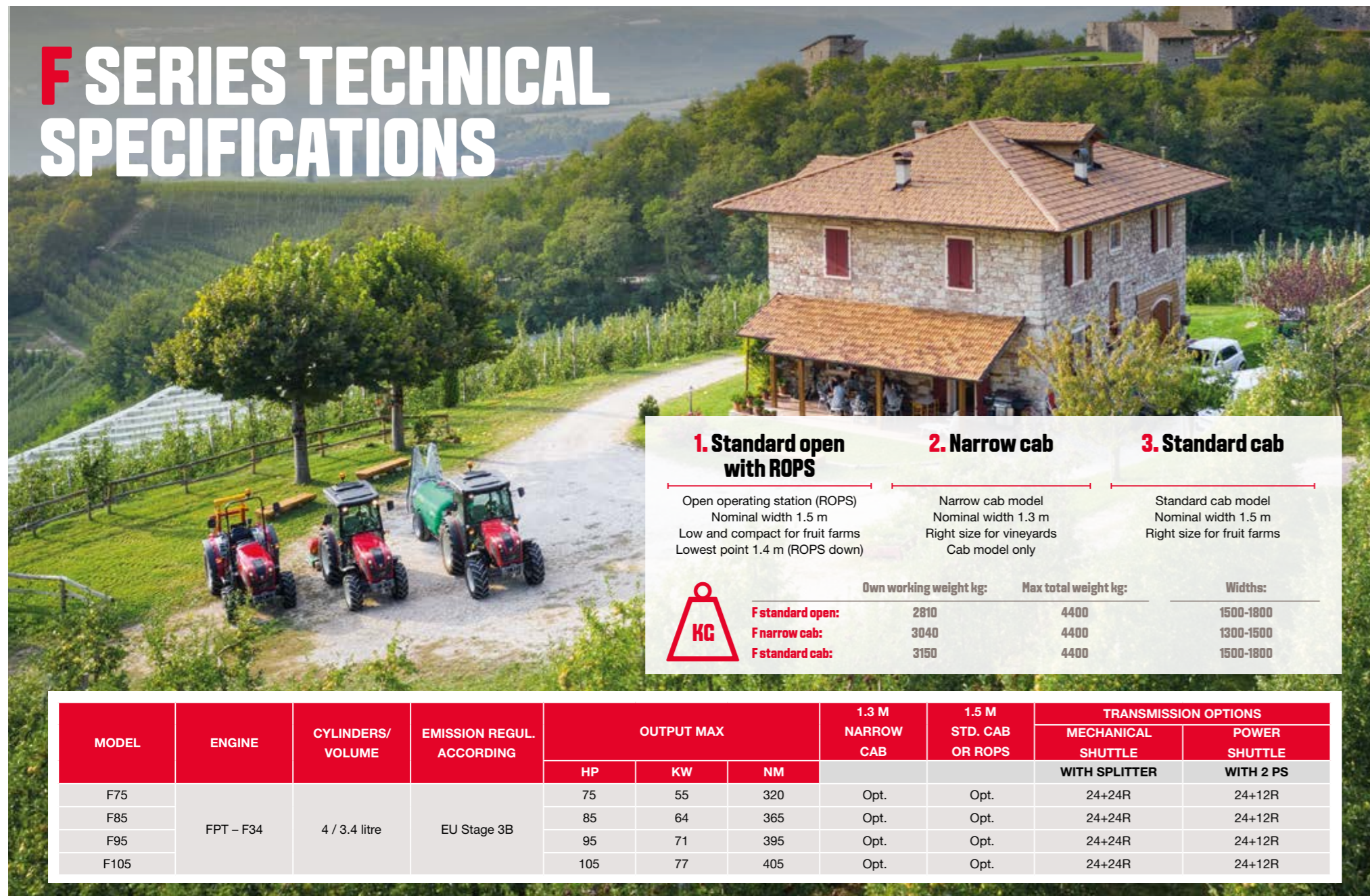
Tractors and related technologies, especially precision farming technologies, are developing at a rapid pace. The Valtra Academy continuously trains Valtra dealers and service technicians, so that the first-class and up-to-date expertise that you get from your Valtra dealer today will continue to meet your needs in the future.


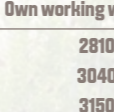


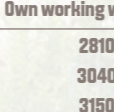


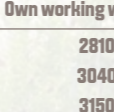

VALTRA COLLECTION

The Valtra Collection offers high-quality clothing and accessories for work and leisure. The materials and details are carefully selected. The clothing reflects Valtra's modern design language, with light, yet extremely durable materials that combine style and functionality.



F SERIES TECHNICAL SPECIFICATIONS



1. Standard open with ROPS	2. Narrow cab	3. Standard cab
Open operating station (ROPS) Nominal width 1.5 m Low and compact for fruit farms Lowest point 1.4 m (ROPS down)	Narrow cab model Nominal width 1.3 m Right size for vineyards Cab model only	Standard cab model Nominal width 1.5 m Right size for fruit farms
 Own working weight kg:	 Own working weight kg:	 Own working weight kg:
F standard open: 2810	F narrow cab: 3040	F standard cab: 3150
 Max total weight kg:	 Max total weight kg:	 Max total weight kg:
F standard open: 4400	F narrow cab: 4400	F standard cab: 4400
 Widths:	 Widths:	 Widths:
F standard open: 1500-1800	F narrow cab: 1300-1500	F standard cab: 1500-1800

MODEL	ENGINE	CYLINDERS/ VOLUME	EMISSION REGUL. ACCORDING	OUTPUT MAX			1.3 M NARROW CAB	1.5 M STD. CAB OR ROPS	TRANSMISSION OPTIONS	
				HP	KW	NM			MECHANICAL SHUTTLE	POWER SHUTTLE
									WITH SPLITTER	WITH 2 PS
F75	FPT – F34	4 / 3.4 litre	EU Stage 3B	75	55	320	Opt.	Opt.	24+24R	24+12R
F85				85	64	365	Opt.	Opt.	24+24R	24+12R
F95				95	71	395	Opt.	Opt.	24+24R	24+12R
F105				105	77	405	Opt.	Opt.	24+24R	24+12R

A SERIES TECHNICAL SPECIFICATIONS

75 - 135 HP



MODEL	MAX POWER		MAX. TORQUE NM
	HP	kW	STD
A75	75	56	315
A85	85	63	350
A95	95	70	355
A105	105	78	435
A115	115	86	455
A125	125	93	520
A135	135	100	540



*A Length *B Height Width

	Own working weight kg:	Max total weight kg:	Widths:	Mudguard widths:
	A75 - A95: 3700	A75 - A95: 6200	A75 - A95: 2068-2207	Without extensions: 1858
	A105-A115: 4300	A105-A115: 8500	A105-A115: 2068-2250	Narrow: 2028
	A125-A135: 4540	A125-A135: 8500	A125-A135: 2139-2361	Wide: 2320



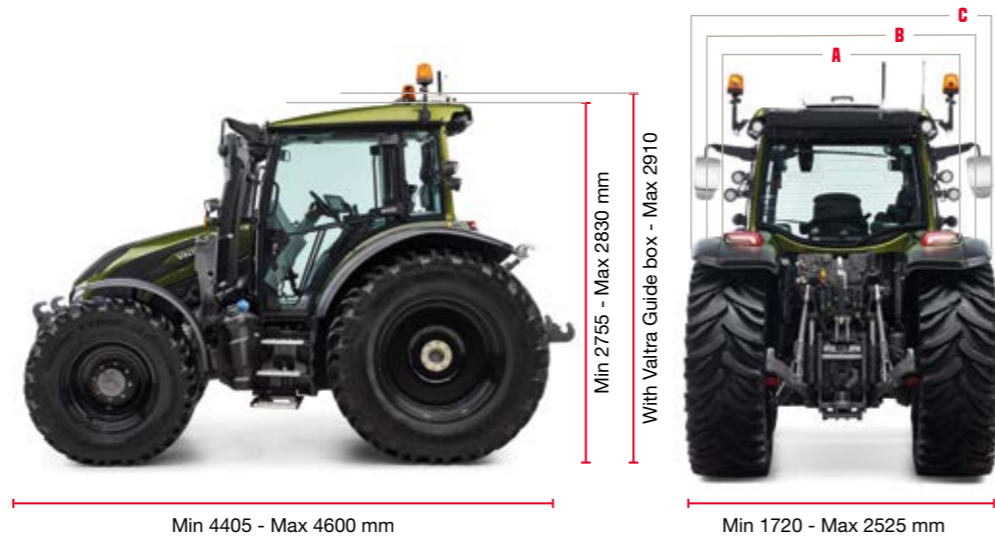
G SERIES TECHNICAL SPECIFICATIONS

105 - 135 HP



MODEL	MAX POWER		MAX. BOOST POWER		MAX. TORQUE NM	
	HP	kW	HP	kW	STD	BOOST
G105	105	78	110	82	440	470
G115	115	85	120	90	460	510
G125	ECO	115	86	125	518	555
	STD	125	93	130	520	540
G135	135	100	145	107	550	560

See specifications table for further engine data. BOOST power is available for field and road (B5 and higher speeds). Sigma Power available for all PTO use but not in 540E.



Own working weight 5140 kg
Max total weight 9500 kg

Mudguard widths:

- A: forest 1858
- B: narrow 2034
- C: wide: 2310

MODEL	HITECH • ACTIVE • VERSU	
	G105-G135	
DIMENSIONS WITH TYRES: 600/65R38 + 480/65R28		
Wheel base [mm]	2550	
Length (without front linkage)	4405	
Transportation length, with front linkage	4600	
Height, without Valtra Guide box, [mm]	2830	
Width, max [mm]	2460	
Turning radius [m]	4.9	
Ground clearance mid [mm]	443	
Ground clearance rear (no hitch) [mm]	460	
Weight (full tanks, + driver) [kg]	5140	
Weight distribution Front/Rear [%]	41/59	
Max total weight [kg]	9500	
Fuel capacity, basic [l]	200	
Fuel capacity, steel tank [l]	160	
AdBlue, capacity [l]	21	
Min tyre size (rear SRI 750)	420/85R34 + 340/85R24	
Max tyre size (rear SRI 825)	600/65R38 + 480/65R28	

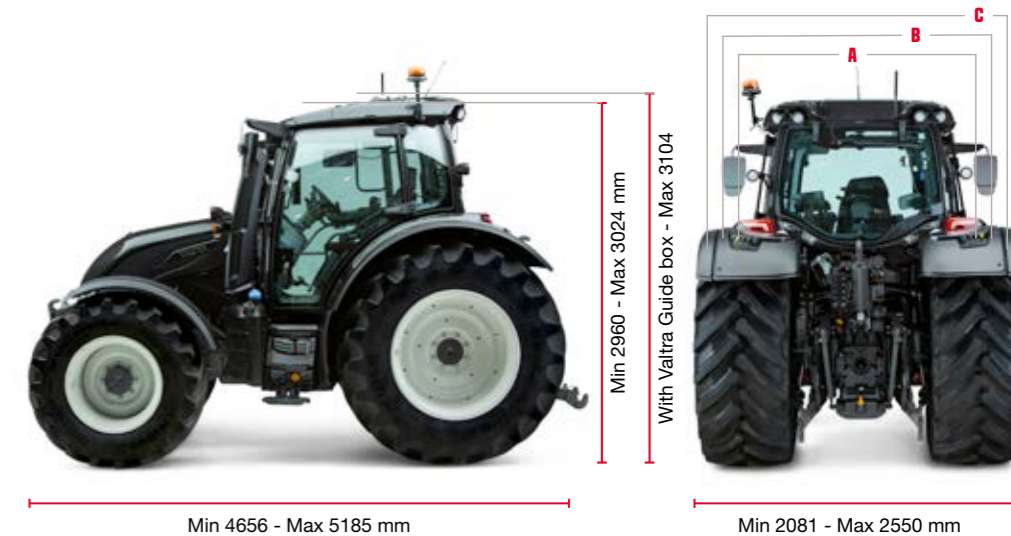
N SERIES TECHNICAL SPECIFICATIONS

105 - 201 HP



MODEL	MAX POWER		MAX. BOOST POWER		MAX. TORQUE NM	
	HP	kW	HP	kW	STD	BOOST
N135	135	99	145	107	570	620
N155e	ECO	155	114	165	660	700
	STD	155	114	165	610	660
N175	165	121	201	148	680	800

See specifications table for further engine data, according ISO 14396. The boost values are available in field and road speeds as well with Sigma Power (option) in PTO use. For model N175 Sigma Power is STD and the boost value is 175 hp for field traction.



Own working weight 6500 kg
Max total weight 11000 kg

Mudguard widths:

- A: forest 2081 mm
- B: narrow 2280 mm
- C: wide: 2550 mm

MODEL	HITECH • ACTIVE • VERSU • DIRECT	
	N135-N175	
DIMENSIONS WITH TYRES: 600/65R38 + 480/65R28		
Wheel base [mm]	2665	
Length (without front linkage)	4726	
Transportation length, with front linkage	5156	
Height, without Valtra Guide box, [mm]	2960	
Width, max [mm]	2550	
Turning radius [m]	4.5	
Ground clearance mid [mm]	500	
Ground clearance rear (no hitch) [mm]	595	
Weight (full tanks, + driver) [kg]	6500	
Weight distribution Front/Rear [%]	38/62	
Max total weight [kg]	11000	
Fuel capacity, basic [l]	235*	
Fuel capacity, steel tank [l]	160	
AdBlue, capacity [l]	45	
Min tyre size (rear SRI 825)	460/85R38 + 380/85R28	
Max tyre size (rear SRI 875)	650/65R38 + 540/65R28	

*optional large tank 315 l

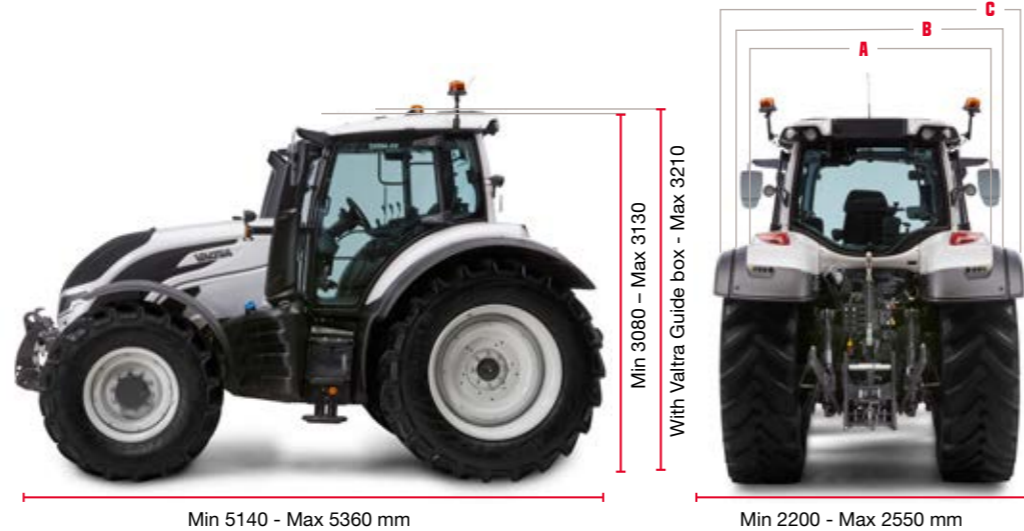


T SERIES TECHNICAL SPECIFICATIONS

155-271 HP

MODEL	MAX POWER		MAX. BOOST POWER		MAX. TORQUE NM	
	HP	kW	HP	kW	STD	BOOST
T145	155	114	170	125	640	680
T155	165	121	180	132	680	740
T175e	ECO	175	129	190	850	900
	STD	175	129	190	740	780
T195	195	143	210	154	800	870
T215	215	158	230	169	870	910
T235 (HiTech/Active/Versu)	235	173	250	184	930	1000
T235 Direct	220	162	250	184	900	930
T255 (HiTech/Active/Versu)	235	173	271	199	930	1000

See specifications table for further engine data. The boost values are available in field and road speeds as well with Sigma Power (option) in PTO use. For models T195, T215, T235, T255 Sigma Power is STD and boost powers up to 250 hp can be reach also in stationary PTO use. T255: Boost value is 250 hp for field traction. T235 Direct: Boost value is 230 hp for field traction.



Own working weight 7300 kg
Max total weight 13500 kg

Mudguard widths:
A: forest 2081 mm
B: narrow 2280 mm
C: wide: 2550 mm

MODEL	HITECH • ACTIVE • VERSU • DIRECT
	T145-T255

DIMENSIONS WITH TYRES: 600/65R28 + 710/70R38	
Wheel base [mm]	2995
Length (with front linkage, transport position)	5800
Transportation length, with front linkage	5360
Height, without Valtra Guide box, [mm]	3130
Width, max [mm]	2550
Turning radius [m]	5,25
Ground clearance mid [mm]	560
Ground clearance rear (no hitch) [mm]	600
Weight (full tanks, + driver) [kg]	7300
Weight distribution Front/Rear [%]	40/60
Max total weight [kg]	13500
Fuel capacity, basic [l]	380
Fuel capacity, steel tank[l]	250
AdBlue, capacity[l]	70
Min tyre size (rear SRI 875)	540/65R28 + 650/65R38
Max tyre size (rear SRI 925)	600/65R28 + 710/70R38



S SERIES TECHNICAL SPECIFICATIONS

290 - 405 HP

MODEL	MAX POWER		MAX. BOOST POWER		MAX. TORQUE NM	
	HP	kW	HP	kW	STD	BOOST
S274	270	199	290	221	1220	1300
S294	295	217	325	239	1300	1390
S324	320	236	350	257	1390	1500
S354	350	258	380	279	1530	1590
S374	370	272	400	294	1540	1600
S394	400	294	405	298	1540	1600

The boost values are available in field and road speeds as well with in PTO use.



Own working weight: 10300 kg
Max total weight: 18000 kg (40 km/h)

MODEL	HITECH • ACTIVE • VERSU • DIRECT
	S274 - S394

DIMENSIONS WITH TYRES: 620/65R34 + 710/75R42	
Wheel base [mm]	3105
Front lower links down to rear lower links (MAX lenght)	6170
Transportation length, with front linkage	5670
Height, without Valtra Guide box, [mm]	3382
Width, max [mm]	2550
Turning radius [m] with brakes / without brakes	7,4/8,4
Ground clearance mid [mm]	472
Weight (full tanks, + driver) [kg]	10300
Weight distribution Front/Rear [%]	40/60
Max total weight [kg]	18000
Fuel capacity, basic [l]	600
AdBlue, capacity[l]	60
Min tyre size (rear SRI 875)	600/70R28 + 650/85R38
Max tyre size (rear SRI 925)	620/65R34 + 710/75R42



You take on extremes each day.

You work in challenging environments, climates and landscapes.
You work hard, putting in long hours and hauling distances.
You work with jobs that ask for speed, power and precision.

To be in complete control, you deserve a visionary partner.
To be always connected, you need the smartest machine.

That is why you trust Valtra.

We work hard to make hard work easy.
We find new ways to solve your challenges.
We make machines that are tough on the outside
and smart on the inside.

Our machines are built to last.
Built to work. Built for you.

YOUR WORKING MACHINE



Valtra Inc.
Valmetinkatu 2
FI-44200 Suolahti
Tel. +358 (0)2045 501

www.valtra.com
showroom.valtra.com
www.youtube.com/valtravideos
www.facebook.com/ValtraGlobal

VALTRA is a worldwide
brand of **AGCO**.

The tractors that appear in this brochure may be equipped with special options.
Changes possible - all rights reserved.